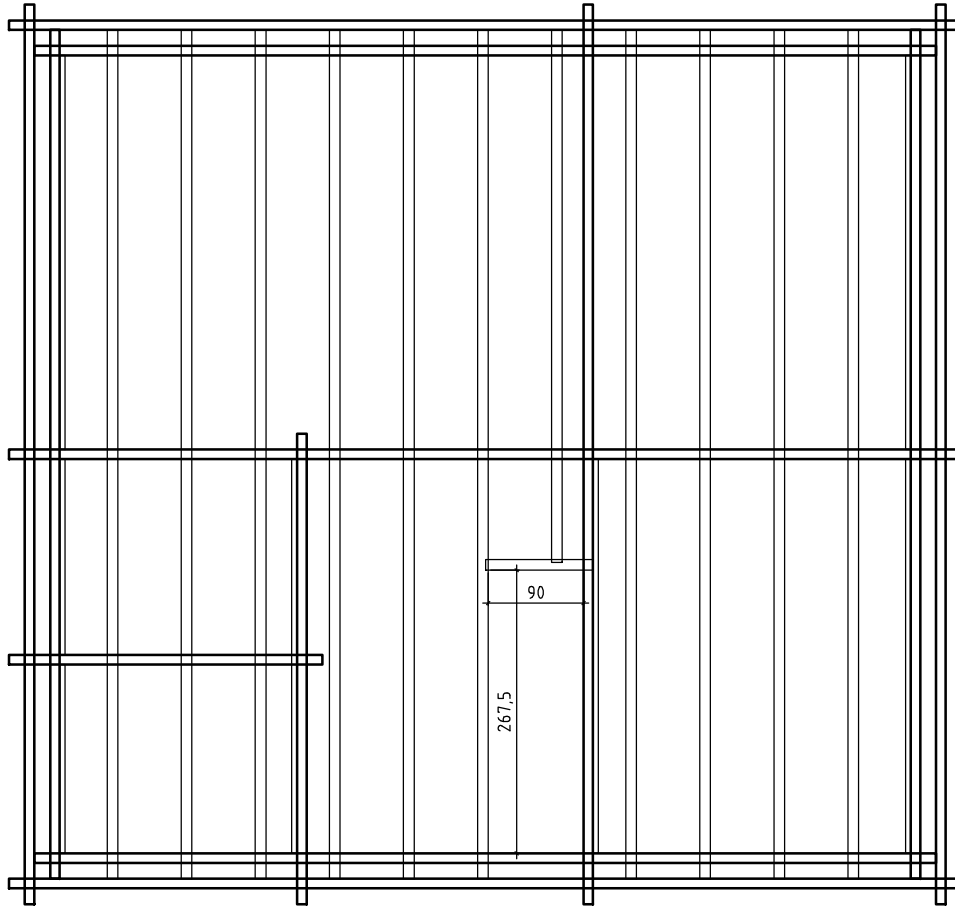
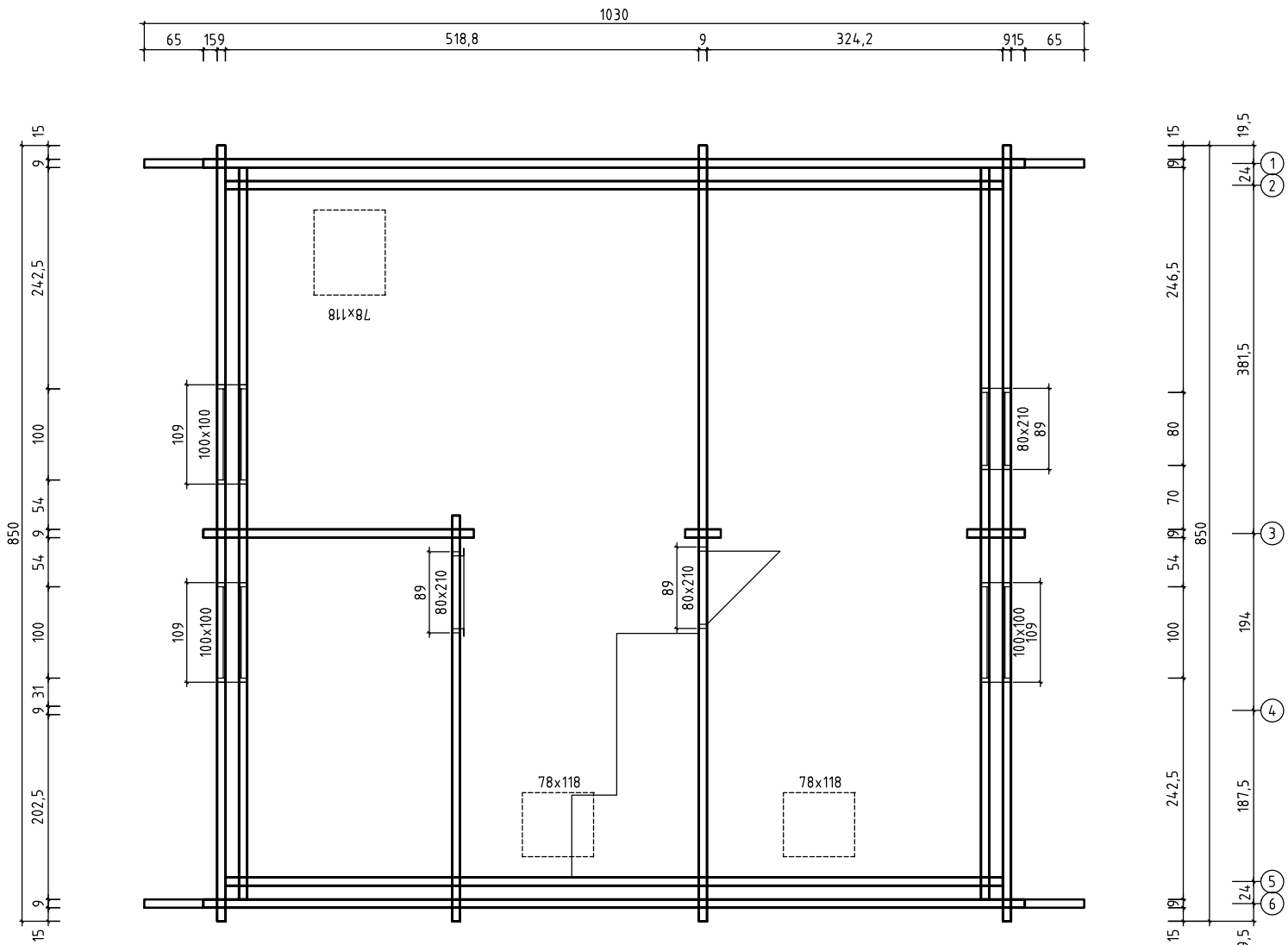


Kood	EG	Leht
Joonis		Mootkava 1:50
Materjal		Kuup. 26.06.2015
Joonestas	File	Mollenhauer.E.dwg



Kood	DECKEBALKEN	Leht	
Joonis		Mootkava	1:50
Materjal		Kuup.	26.06.2015
Joonestas		File	Mollenhauer.E.dwg



65 159 518,8 9 324,2 915 65

15 9 202,5 9 31 100 54 9 54 100 242,5 9 15

65 159 248,2 9 261,6 9 324,2 915 65

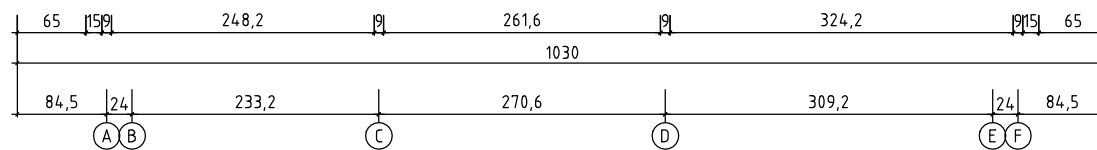
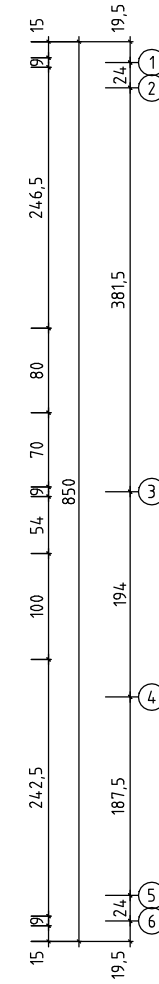
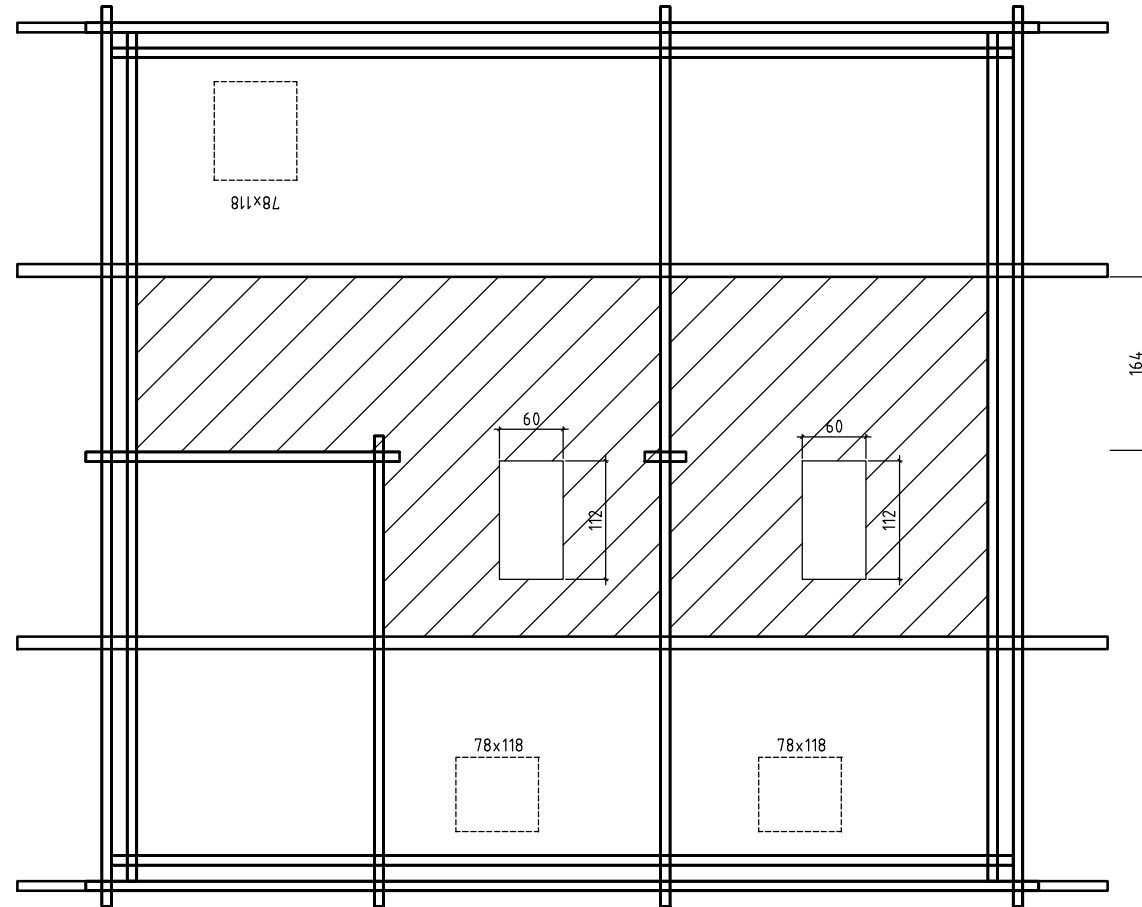
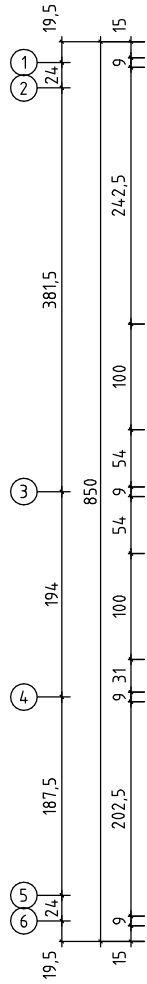
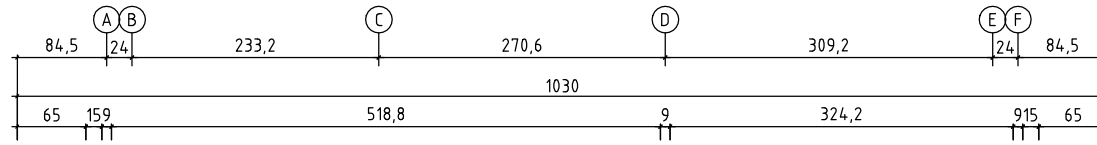
84,5 24 233,2 270,6 309,2 24 84,5

(A) (B) (C) (D) (E) (F)

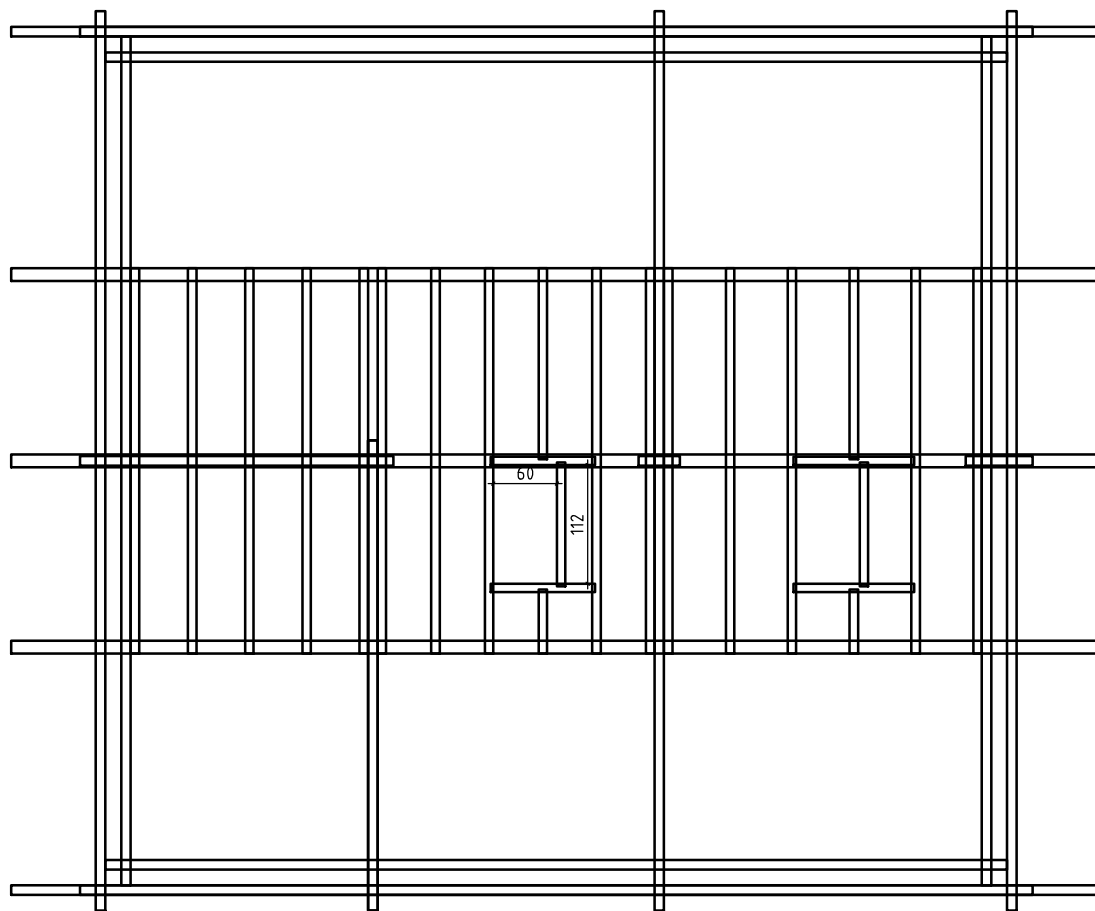
15 9 242,5 80 70 9 54 100 194 187,5 19,5 24 19,5

1 2 3 4 5 6

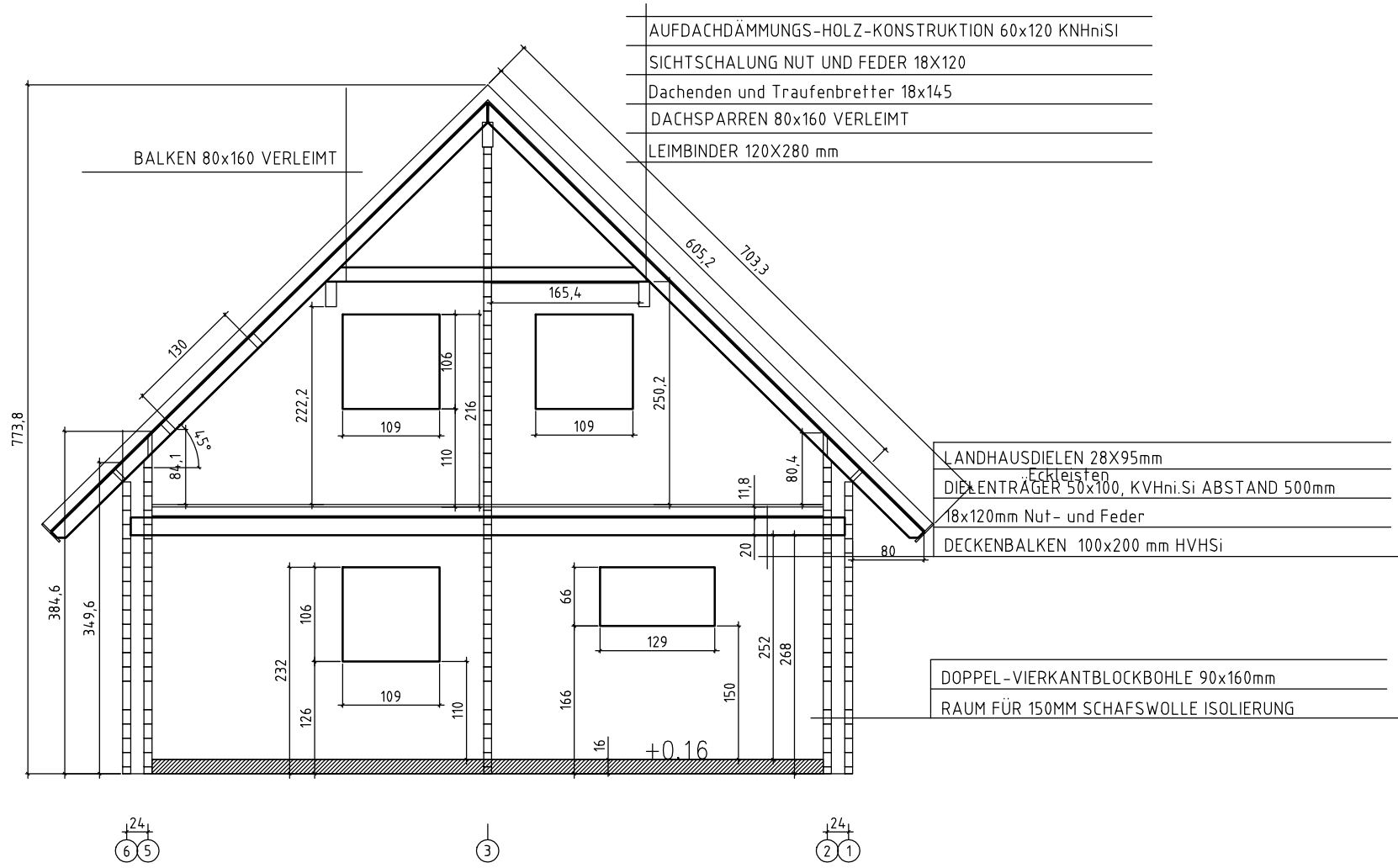
Kood	DG	Leht
Joonis		Mootkava 1:50
Materjal		Kuup. 26.06.2015
Joonestas		File Mollenhauer.E.dwg



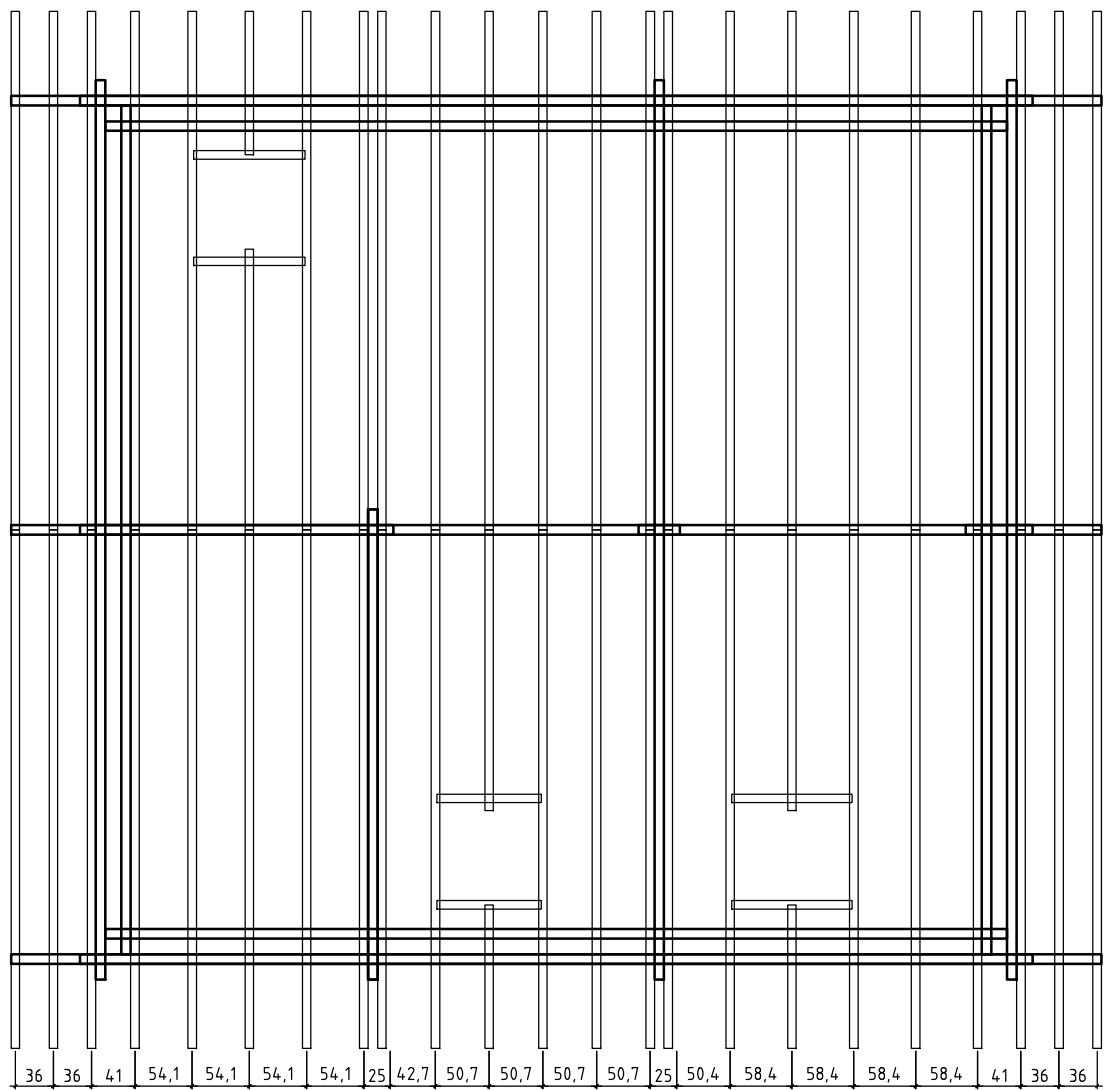
Kood	DG	Leht
Joonis		Mootkava 1:50
Materjal		Kuup. 26.06.2015
Joonestas		File Mollenhauer.E.dwg



Kood	DG	Leht	
Joonis		Mootkava	1:50
Materjal		Kuup.	26.06.2015
Joonestas		File	Mollenhauer.E.dwg



Kood	SNITT	Leht
Joonis		Mootkava 1:50
Materjal		Kuup. 26.06.2015
Joonestas	File	Mollenhauer.E.dwg



36 36 41 54,1 54,1 54,1 54,1 25 42,7 50,7 50,7 50,7 50,7 25 50,4 58,4 58,4 58,4 58,4 41 36 36

Kood	SPARREN	Leht
Joonis		Mootkava 1:50
Materjal		Kuup. 26.06.2015
Joonestas	File	Mollenhauer.E.dwg

